



Case Study:

The Wells Barn on Fisher Road

Name: _____

Research it!

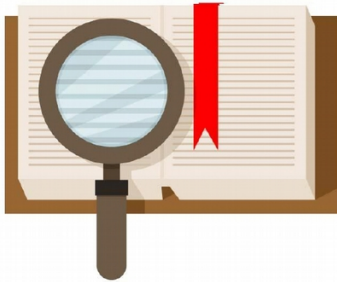


Before it became weathered and worn, this Wells barn housed dairy cows that provided milk to the patients of St. Mary's Hospital, the first hospital in Rochester, New York.

To learn more about the early history of this Wells barn still standing in Chili, New York, visit:

<https://www.wellsbarnhistory.com/206-fisher-road-rochester-ny-14624/>

Next, **read an archival article** about the industrious farm this barn was built to support provided by the Archives Province of St. Louise run by the Daughters of Charity in Emmitsburg, Maryland.



Find it!

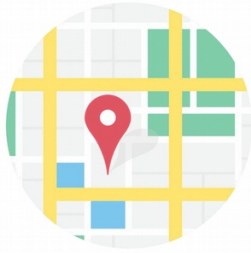
Find the sentence in the article that tells you how big the farm was back in 1914 at the time the article was written.



Report it!

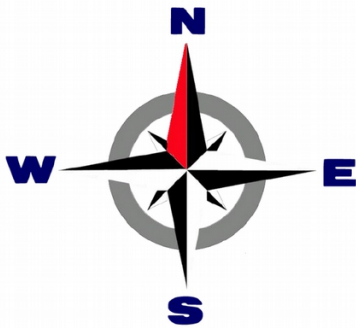
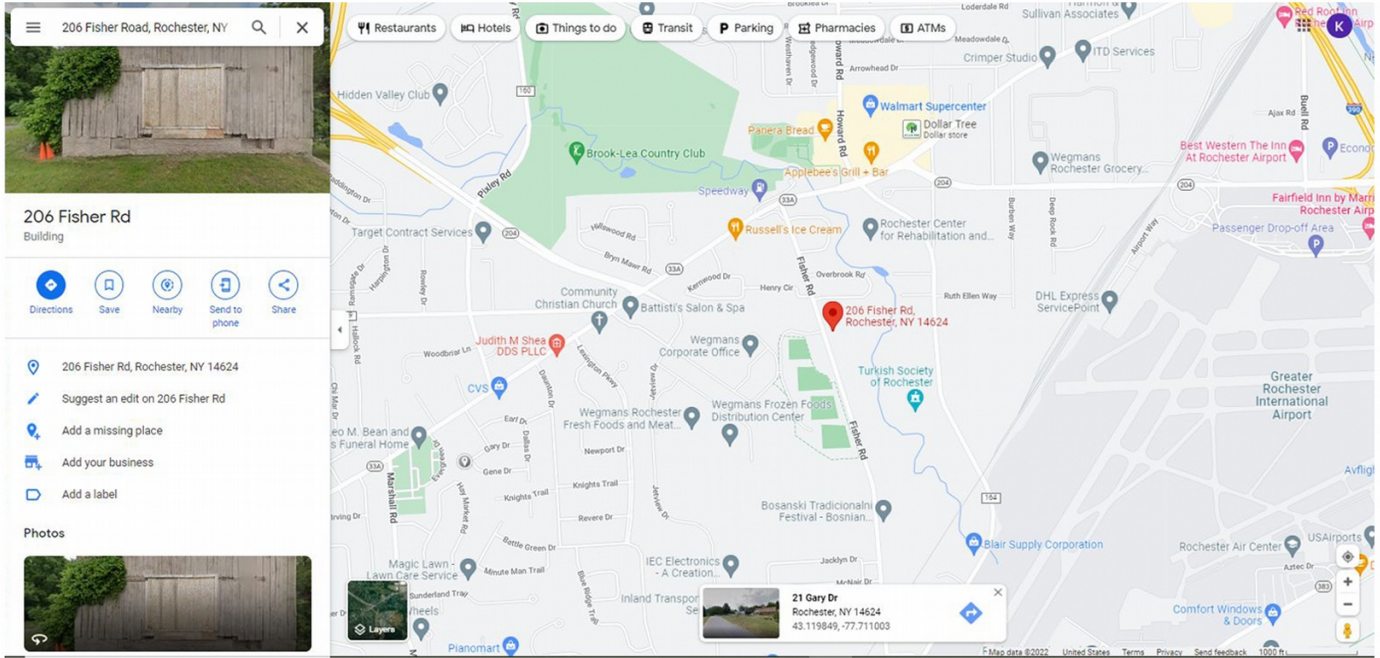
The farm supervised by the Sisters at St. Mary's was composed of

..... acres in 1914.



Locate it!

Link to Google Map

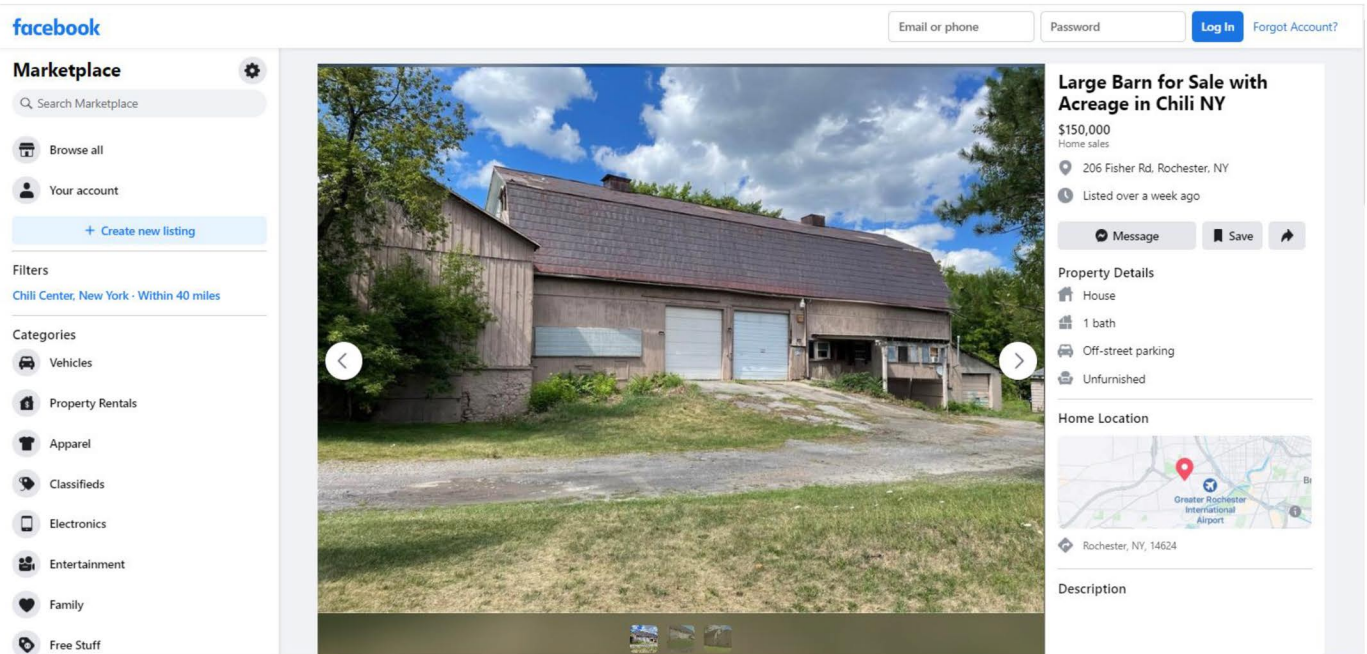


Use the compass rose as a guide.

What well-known Rochester grocery store has its headquarters located just **WEST of the barn on Fisher Road today?**

What large transportation facility is located to the **EAST of the barn on Fisher Road?**

The original farm has been whittled down to a parcel of land containing 1.7 acres and the barn. This property was listed for sale during the summer of 2022.



The screenshot shows a Facebook Marketplace listing for a property. The main image is a large, weathered wooden barn with a dark roof and two large white garage doors. The barn is situated on a grassy lot with trees in the background. To the right of the image, the listing details are visible: the title is "Large Barn for Sale with Acreage in Chili NY", the price is "\$150,000", and the location is "206 Fisher Rd, Rochester, NY". Other details include "Home sales", "Listed over a week ago", and "Property Details" such as "House", "1 bath", "Off-street parking", and "Unfurnished". A map shows the location near "Greater Rochester International Airport".



Think about it!

How could this barn's location make it challenging for its owner to sell?



Consider the part of the story where the barn asks this central question:

“What good is a barn in the modern world?”

Think about it!

Compare the situation of this Wells barn on Fisher Road in Chili, New York to the situation of the fictional barn in Debby Atwell’s story. How are they similar?



Think about it!

If you could buy this barn and completely renovate it, what new life would you give it?

How could it be used by the community in a new and exciting way?